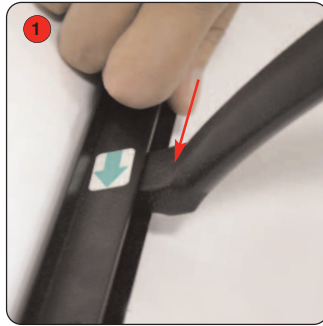


Assembly Instructions

Bannerstand Assembly



Kit includes: top rail, bottom rail, stabilising foot, telescopic poles, wrap and carry bag/tube



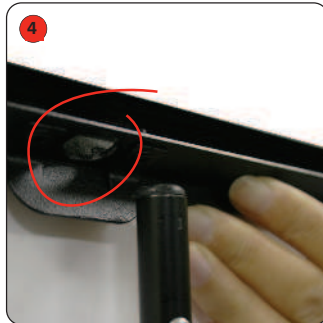
1 Take the stabilising foot and slide into the bottom rail in the direction of the green arrow until it is centrally positioned and locked into place.



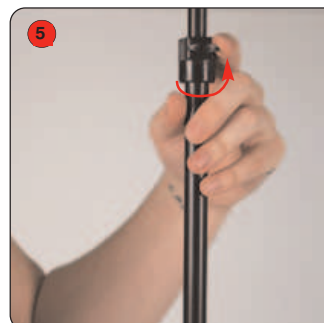
2 Slot the bottom of the telescopic pole into the foot.



3 Lengthen the pole by pull out each section, pulling out the pole to the desired height and then twist the thumb screw to secure pole into place



4 Carefully unroll the graphic and secure into position by locating the top rail hole with the telescopic pole.



5 Repeat Step 3 if necessary to tension the graphic image.