

Assembly Instructions

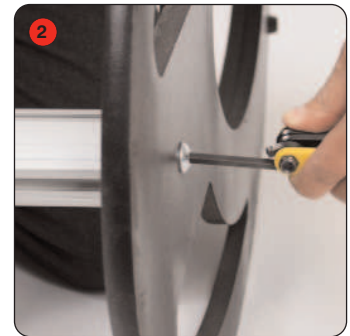
Saturn assembly



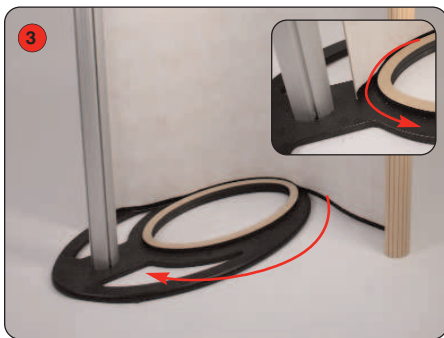
Kit includes: Top, base, wrap, Linear post, acrylic literature holder, stand-offs, screws, allen key.



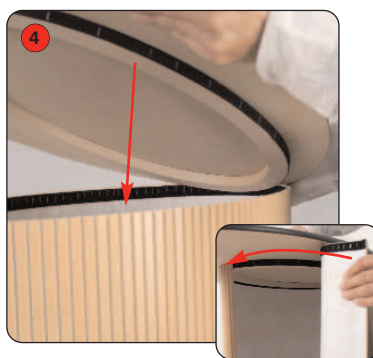
1 Take the base and insert a screw through the underside, through the hole, feeding it into the bottom of the Linear post.



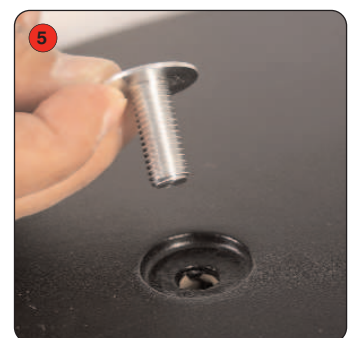
2 Screw into position securely.



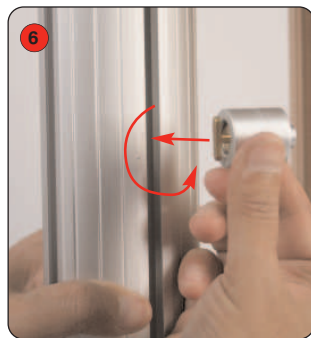
3 Take the wrap and attach to the hook and loop strip on the base.



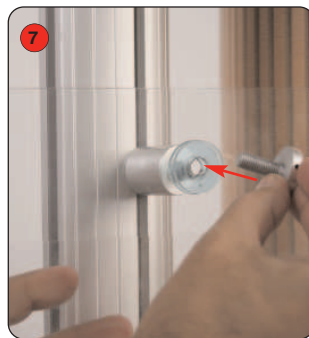
4 Lower the top into the wrap and secure against the hook and loop strip.



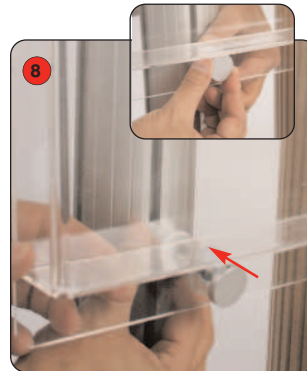
5 Once top is in place, secure to the Linear post by inserting the 2nd screw through the hole into the post, and fastening in securely.



6 To fasten the literature holder, insert screw in one stand-off. Remove the stand off top.



7 Place a washer either side of the literature holder and then secure into place with stand-off (screw in).



8 Repeat steps 6 and 7 with the 2nd stand-off for the bottom of the literature holder.

