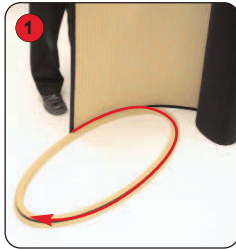


# Assembly Instructions



Kit includes: Acrylic shelf, 80mm standoff (x 3), top, tambour wrap and base



1 Place the base on the floor with the ridging uppermost. Attach the tambour to the base.



2 Make sure that the hook fastener on both the tambour and base fit securely together.



3 Place the top onto the tambour wrap and secure using hook fastener.



4 Unfasten and remove the cover from each standoff.



5 Fasten each standoff to the brass fasteners mounted to the top.



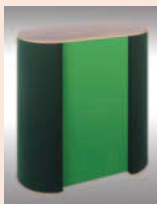
6 Lower the acrylic shelf over the standoffs.



7 Secure the acrylic shelf to the standoffs by fastening the stand off covers.



Other products in our Physique range include:



**Double D**  
Multi-function popular style workstation.



**Single D**  
Designed to add useful counter space to any display.



**Elan**  
Distinctive styling, Ideal workstation