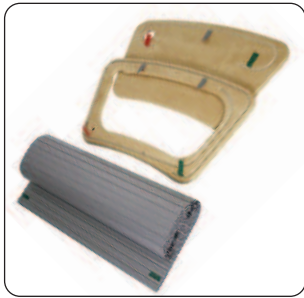
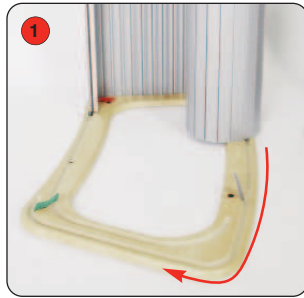


# Assembly Instructions

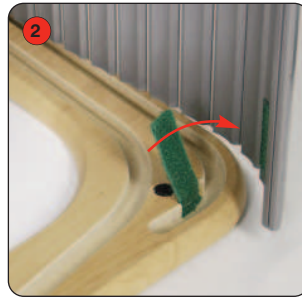
## Standard style unit assembly (Applicable to all four designs)



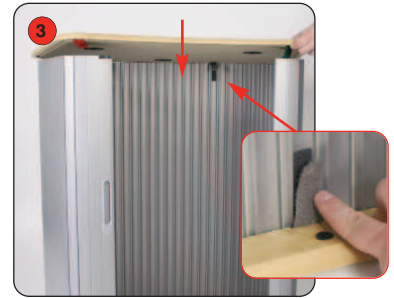
Kit includes: Base, top and PVC tambour wrap



1 Lay the base on the floor, grooves side up and slot the tambour wrap into the base.

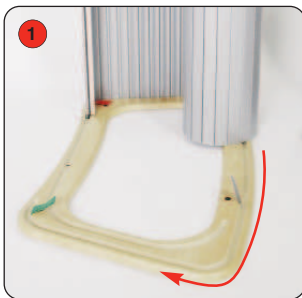


2 Secure the wrap to the base using the hook fastener tabs.

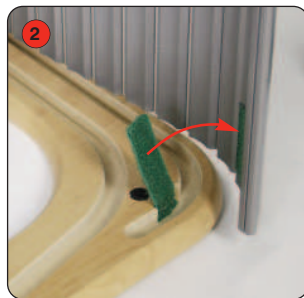


3 Lower the top onto the tambour, slotting into the groove. Secure using the hook fastener tabs.

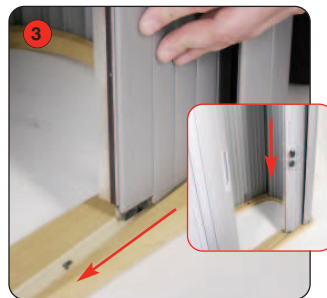
## Pro style unit assembly (Applicable to all four designs)



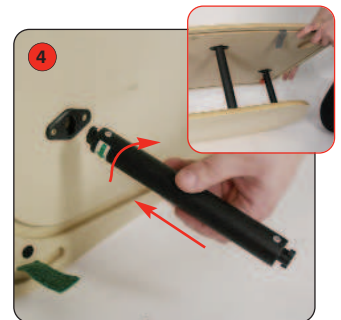
1 Lay the base on the floor, grooves side up and slot the tambour wrap into the base.



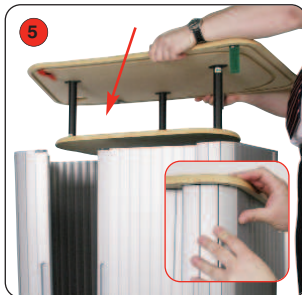
2 Secure the wrap to the base using the hook fastener tabs.



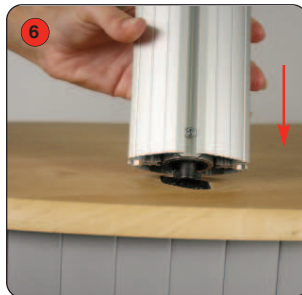
3 If applicable, slot the optional door wrap into the base groove and slide around.



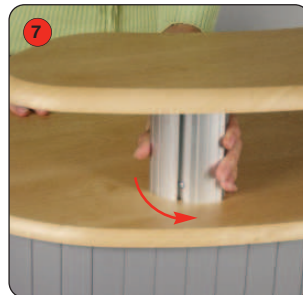
4 Attach the internal shelf to the top using 3 off twist n lock poles.



5 Lower the top and shelf inside the half built unit, slotting the tambour into top grooves. Secure the top using the hook fastener tabs



6 To attach the top shelf, place the twist and lock Linear into the locator.



7 Once the top shelf is in place simply twist the linear into place to secure shelf.